



Fig. 147. *Chlorurus perspicillatus*, initial phase, Midway, Hawaiian Islands.

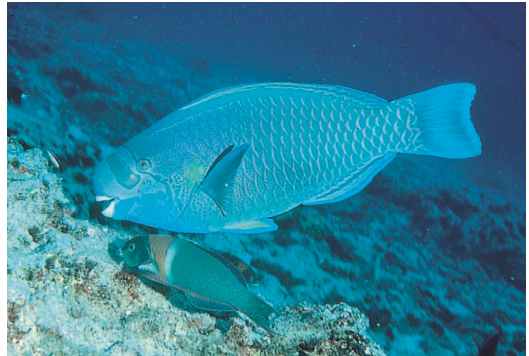


Fig. 148. *Chlorurus perspicillatus*, male, Midway, Hawaiian Islands.



Fig. 149. *Chrysiptera rapanui*, Easter Island.

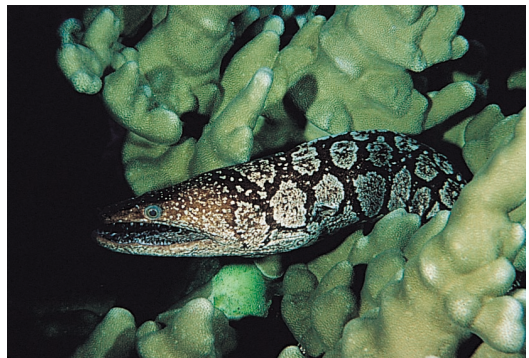


Fig. 150. *Enchelycore ramosa*, Easter Island.



Fig. 151. *Trachypoma macracanthus*, Easter Island.



Fig. 152. *Cirripectes alboapicalis*, Easter Island.



Fig. 153. *Anampses femininus*, female, Easter Island.

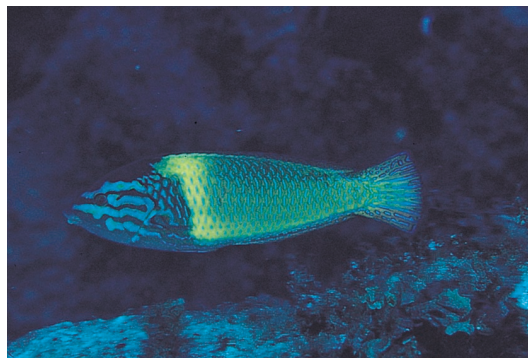


Fig. 154. *Anampses femininus*, male, Easter Island.